

Explanatory Notes

All cases admitted to hospital between 01 September 2024 and 30 November 2024 have been included. Only cases where the necessary data are available have been included in the denominator for each individual analysis.

The results for process measures for which fewer than 10 cases have available data will not be reported. Instead value will be marked as 'Insufficient data'.

At ICB level, runcharts are compared to national quartiles.

For better insight to how these standards have been structured, please refer to the **NELA standards document**.

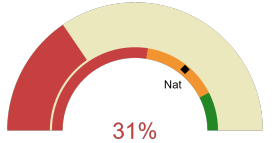


NHS Nottingham And Nottinghamshire Integrated Care Board

2024-25 Reporting Period 6: 01 September 2024 - 30 November 2024

These plots represent patients having an emergency laparotomy during Year 2024-25 Reporting Period 6 of NELA data collection. This version will be made publicly available via the NELA website. Feedback from participating ICBs and hospitals is welcome.

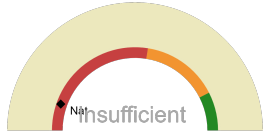
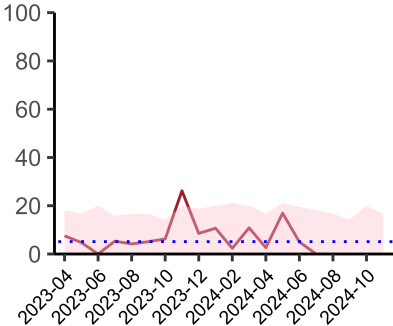
NELA process and outcome measures



Estimated case ascertainment
01 September 2024 - 30 November 2024

**Estimated Case Ascertainment
(Based on HES Data)**

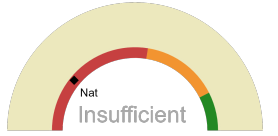
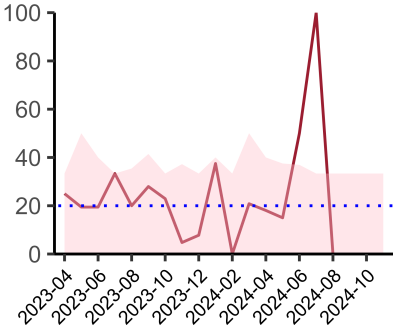
Expected number of cases 117
Total cases entered 28
Cases locked 0
Cases unlocked 28



Proportion of patients who had a CT scan that was reported by senior radiologist and communicated with the team in the correct time scale before surgery
01 September 2024 - 30 November 2024

CT reported by a senior radiologist (ST3+) and communicated with the team in the correct time scale before surgery.

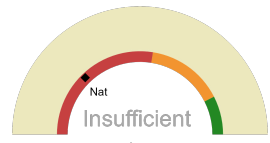
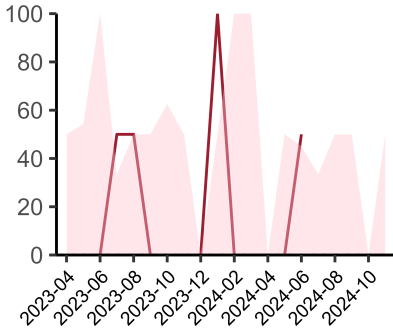
National mean 11%
Number of patients included 0
Data completeness 100%



Proportion of patients with suspected sepsis or infection that have antibiotic administration within the correct clinical timeframe
01 September 2024 - 30 November 2024

Combined Infection management standard - antibiotic administration within the correct clinical timeframe

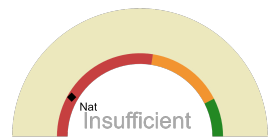
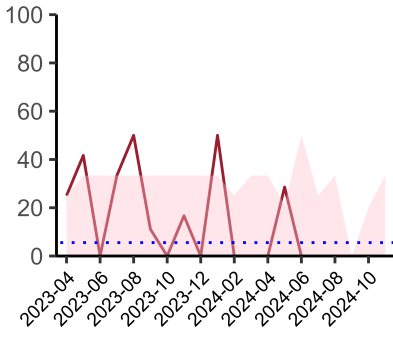
National mean 22%
Number of patients included 0
Data completeness 0%



Proportion of patients with suspected septic shock that have antibiotic administration within the correct clinical timeframe
01 September 2024 - 30 November 2024

Septic Shock - antibiotic administration within the correct clinical timeframe

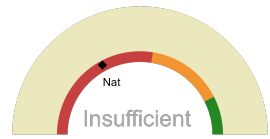
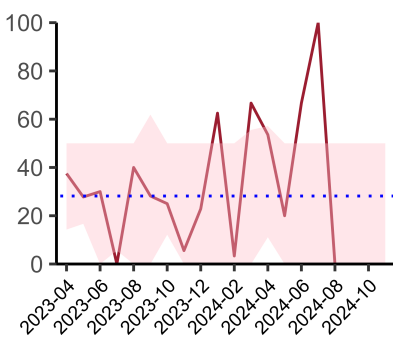
National mean 26%
Number of patients included 0
Data completeness 0%



Proportion of patients with suspected sepsis that have antibiotic administration within the correct clinical timeframe
01 September 2024 - 30 November 2024

Sepsis - antibiotic administration within the correct clinical timeframe

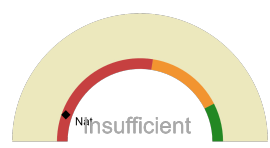
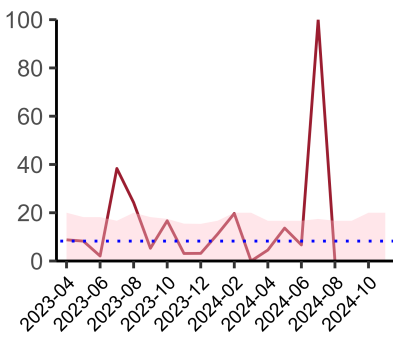
National mean 17%
Number of patients included 0
Data completeness 0%



Proportion of patients with suspected infection that have antibiotic administration within the correct clinical timeframe
01 September 2024 - 30 November 2024

Infection - antibiotic administration within the correct clinical timeframe

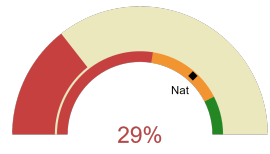
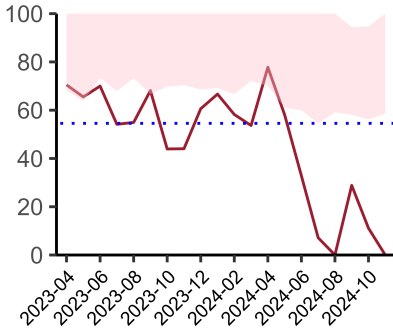
National mean 34%
Number of patients included 0
Data completeness 0%



Proportion of non-elective, immediate surgery cases, arriving in theatre within 6 hours
01 September 2024 - 30 November 2024

Timeliness - proportion of patients arriving in theatre according to correct clinical timeframe.

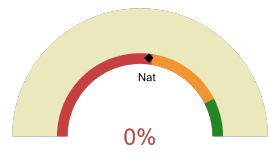
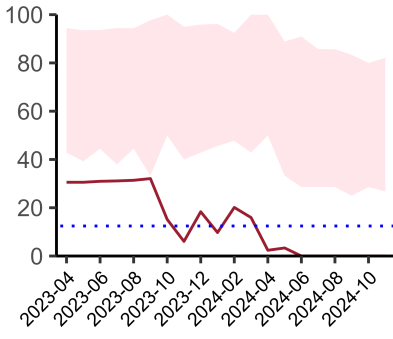
National mean 11%
Number of patients included 0
Data completeness NaN%



Risk of death documented before surgery
01 September 2024 - 30 November 2024

Risk documented before surgery

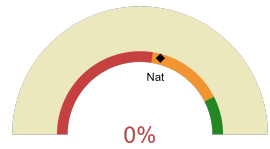
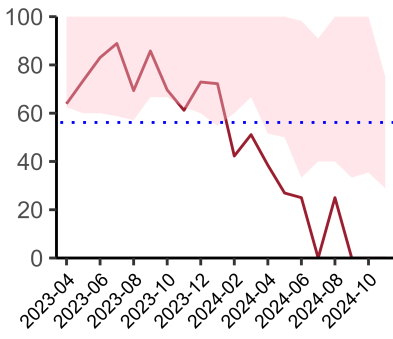
National mean 73%
Number of patients included 28
Data completeness 100%



Risk of death documented after surgery
01 September 2024 - 30 November 2024

Risk documented after surgery

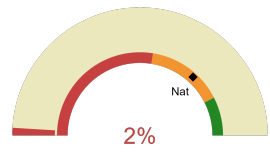
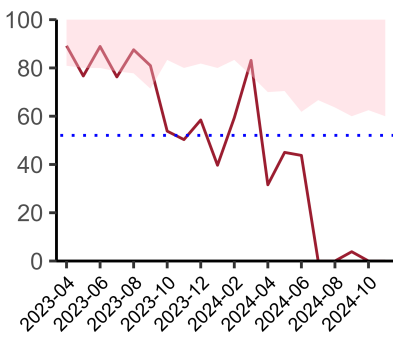
National mean 54%
Number of patients included 28
Data completeness 100%



Admitted to critical care following surgery when the risk of death ≥ 5% (Excludes patients who died in theatre or with a decision to palliate)
01 September 2024 - 30 November 2024

Admitted to Critical Care (risk of death ≥ 5%)

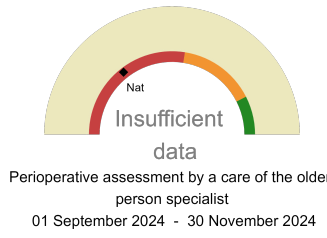
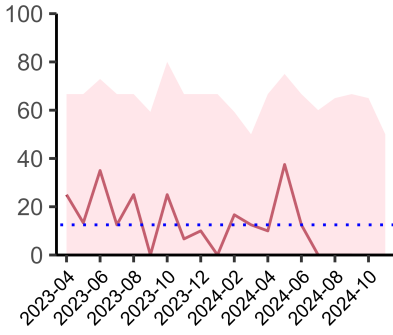
National mean 58%
Number of patients included 28
Data completeness 100%



Consultant surgeon and anaesthetist present in theatre when risk of death ≥ 5%
01 September 2024 - 30 November 2024

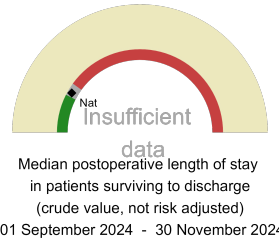
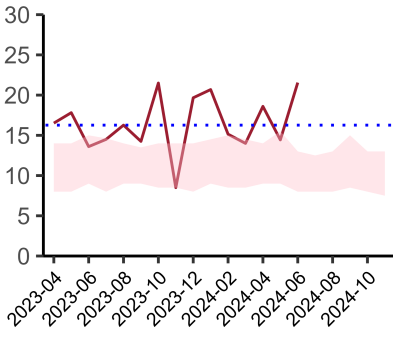
Consultant Anaesthetist & Consultant Surgeon in theatre (risk of death ≥ 5%)

National mean 73%
Number of patients included 27
Data completeness 100%



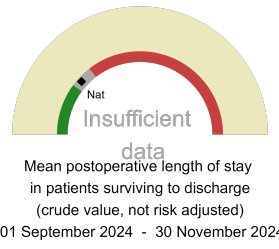
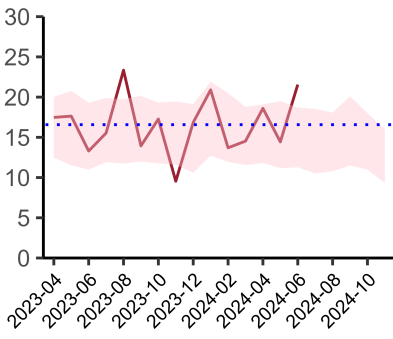
Perioperative Assessment by a member of the geriatrician-led multidisciplinary team for patient aged 65 or over and frail (CFS ≥ 5) or 80+

National mean 29%
Number of patients included 6
Data completeness 61%



Mean postoperative Length of Stay

National median 10 days
Number of patients included 0
Data completeness NaN%



Median postoperative Length of Stay

National mean 14 days
Number of patients included 0
Data completeness NaN%

Integrated Care Board

NHS Nottingham And Nottinghamshire Integrated Care Board ICB comprises Kings Mill Hospital, Nottingham City Hospital, Queens Medical Centre - Nottingham.