

Explanatory Notes

All cases admitted to hospital between 01 August 2024 and 31 October 2024 have been included. Only cases where the necessary data are available have been included in the denominator for each individual analysis.

The results for process measures for which fewer than 10 cases have available data will not be reported. Instead value will be marked as 'Insufficient data'.

At ICB level, runcharts are compared to national quartiles.

For better insight to how these standards have been structured, please refer to the **NELA standards document**.

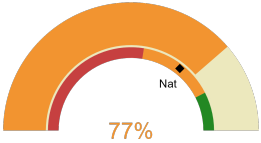


NHS Somerset Integrated Care Board

2024-25 Reporting Period 5: 01 August 2024 - 31 October 2024

These plots represent patients having an emergency laparotomy during Year 2024-25 Reporting Period 5 of NELA data collection. This version will be made publicly available via the NELA website. Feedback from participating ICBs and hospitals is welcome.

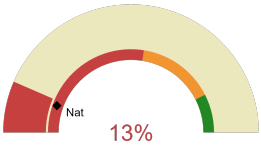
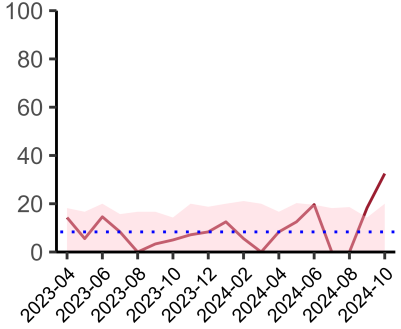
NELA process and outcome measures



Estimated case ascertainment
01 August 2024 - 31 October 2024

**Estimated Case Ascertainment
(Based on HES Data)**

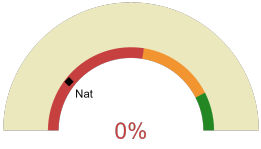
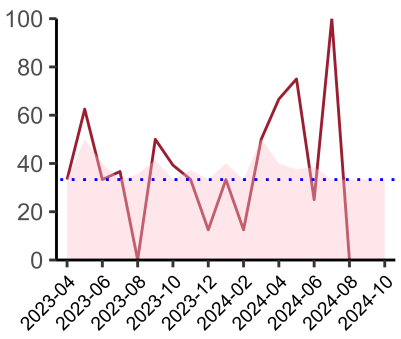
Expected number of cases 66
Total cases entered 47
Cases locked 45
Cases unlocked 2



Proportion of patients who had a CT scan that was reported by senior radiologist and communicated with the team in the correct time scale before surgery
01 August 2024 - 31 October 2024

CT reported by a senior radiologist (ST3+) and communicated with the team in the correct time scale before surgery.

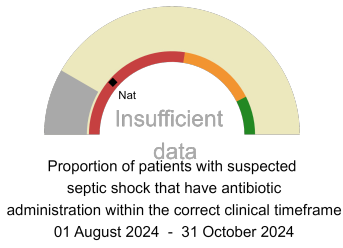
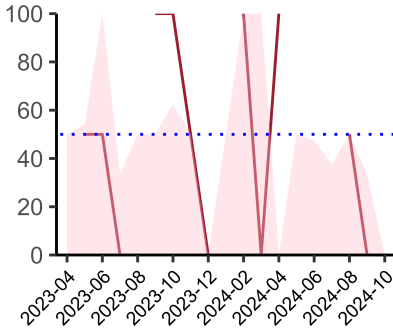
National mean 11%
Number of patients included 41
Data completeness 100%



Proportion of patients with suspected sepsis or infection that have antibiotic administration within the correct clinical timeframe
01 August 2024 - 31 October 2024

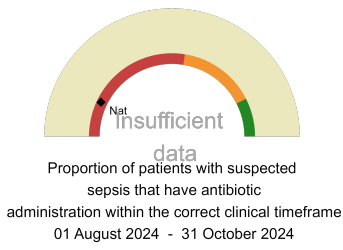
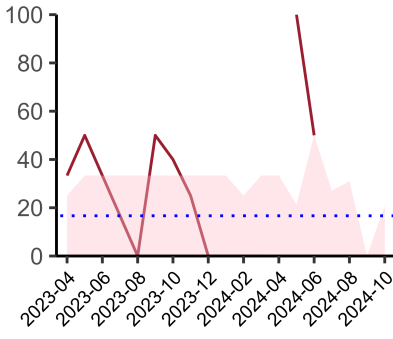
Combined Infection management standard - antibiotic administration within the correct clinical timeframe

National mean 21%
Number of patients included 13
Data completeness 100%



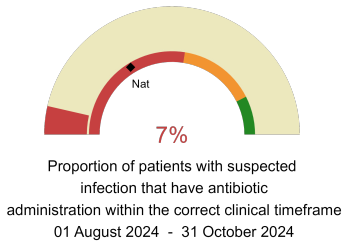
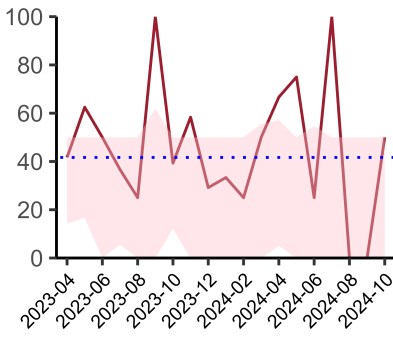
Septic Shock - antibiotic administration within the correct clinical timeframe

National mean 23%
Number of patients included 7
Data completeness 100%



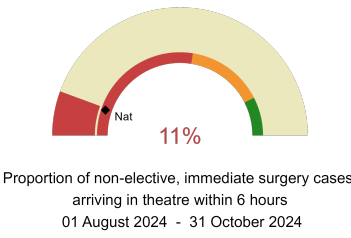
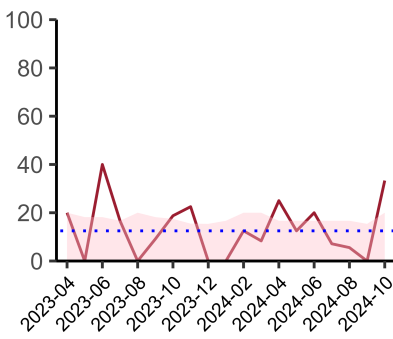
Sepsis - antibiotic administration within the correct clinical timeframe

National mean 14%
Number of patients included 7
Data completeness 100%



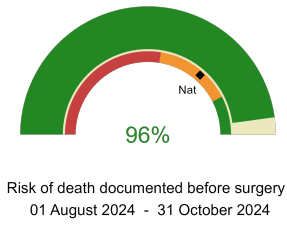
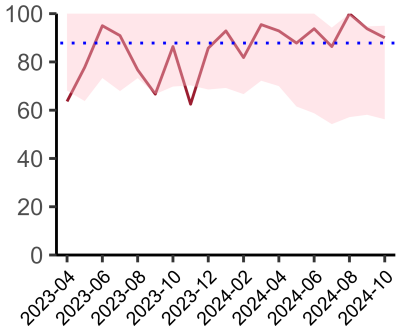
Infection - antibiotic administration within the correct clinical timeframe

National mean 32%
Number of patients included 12
Data completeness 100%



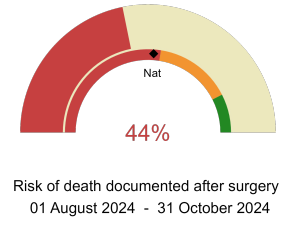
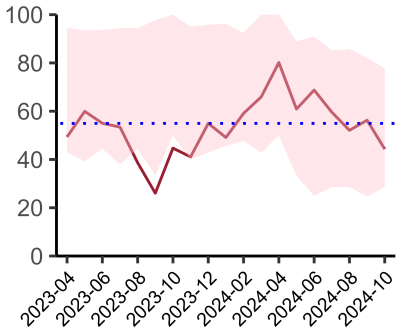
Timeliness - proportion of patients arriving in theatre according to correct clinical timeframe.

National mean 10%
Number of patients included 26
Data completeness 100%



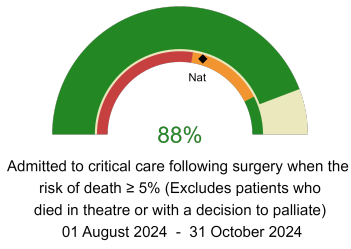
Risk documented before surgery

National mean 73%
Number of patients included 47
Data completeness 100%



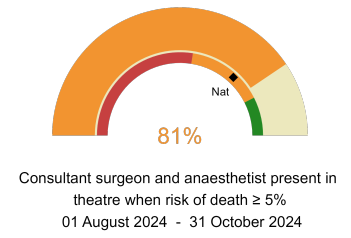
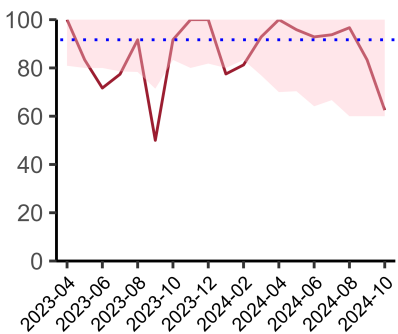
Risk documented after surgery

National mean 52%
Number of patients included 47
Data completeness 100%



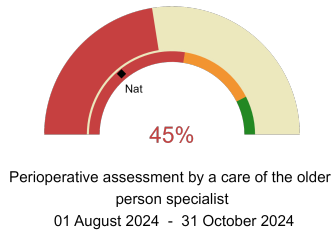
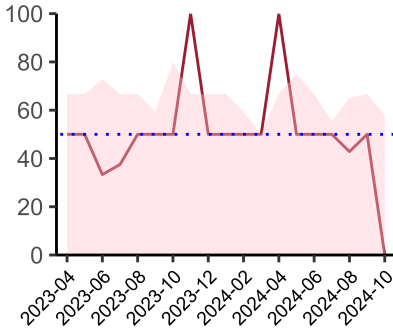
Admitted to Critical Care (risk of death \geq 5%)

National mean 59%
Number of patients included 22
Data completeness 100%



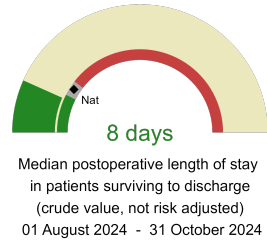
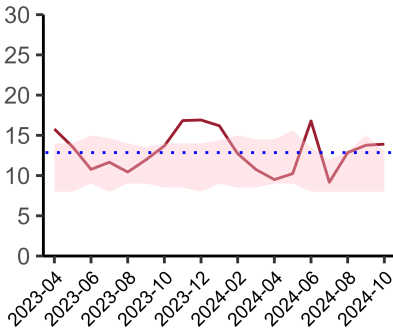
Consultant Anaesthetist & Consultant Surgeon in theatre (risk of death \geq 5%)

National mean 74%
Number of patients included 38
Data completeness 89%



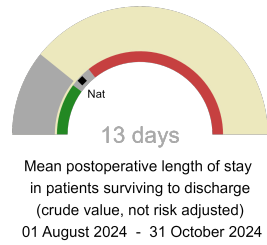
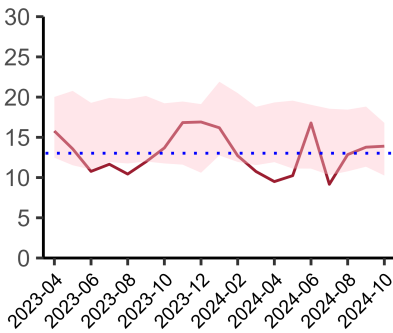
Perioperative Assessment by a member of the geriatrician-led multidisciplinary team for patient aged 65 or over and frail (CFS ≥ 5) or 80+

National mean 28%
Number of patients included 15
Data completeness 100%



Mean postoperative Length of Stay

National median 11 days
Number of patients included 42
Data completeness 100%



Median postoperative Length of Stay

National mean 14 days
Number of patients included 42
Data completeness 100%

Integrated Care Board

NHS Somerset Integrated Care Board ICB comprises Musgrove Park Hospital, Yeovil District Hospital.