

**Explanatory Notes**

All cases admitted to hospital between 01 August 2024 and 31 October 2024 have been included. Only cases where the necessary data are available have been included in the denominator for each individual analysis.

The results for process measures for which fewer than 10 cases have available data will not be reported. Instead value will be marked as 'Insufficient data'.

At ICB level, runcharts are compared to national quartiles.

For better insight to how these standards have been structured, please refer to the **NELA standards document**.

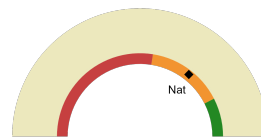


**NHS Staffordshire And Stoke-On-Trent Integrated Care Board**

**2024-25 Reporting Period 5: 01 August 2024 - 31 October 2024**

These plots represent patients having an emergency laparotomy during Year 2024-25 Reporting Period 5 of NELA data collection. This version will be made publicly available via the NELA website. Feedback from participating ICBs and hospitals is welcome.

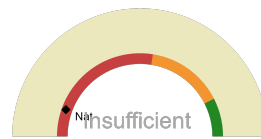
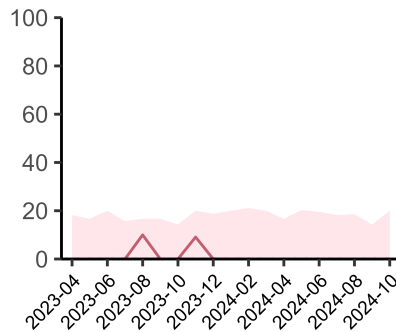
**NELA process and outcome measures**



Estimated case ascertainment  
01 August 2024 - 31 October 2024

**Estimated Case Ascertainment  
(Based on HES Data)**

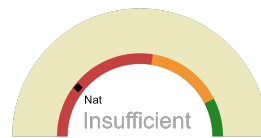
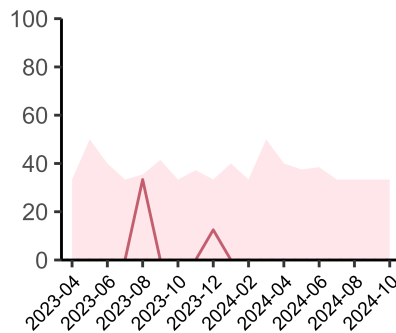
Expected number of cases 0  
Total cases entered 0  
Cases locked 0  
Cases unlocked 0



Proportion of patients who had a CT scan that was reported by senior radiologist and communicated with the team in the correct time scale before surgery  
01 August 2024 - 31 October 2024

**CT reported by a senior radiologist  
(ST3+) and communicated with the team in the correct time scale before surgery.**

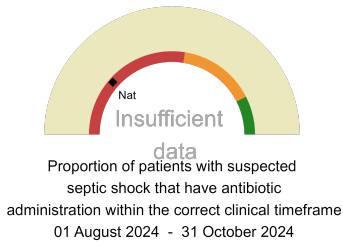
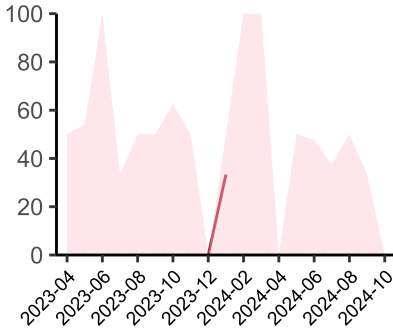
National mean 11%  
Number of patients included 0  
Data completeness NaN%



Proportion of patients with suspected sepsis or infection that have antibiotic administration within the correct clinical timeframe  
01 August 2024 - 31 October 2024

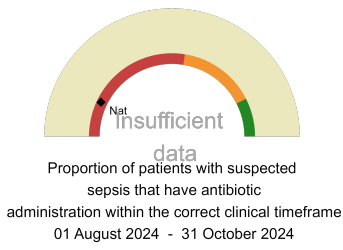
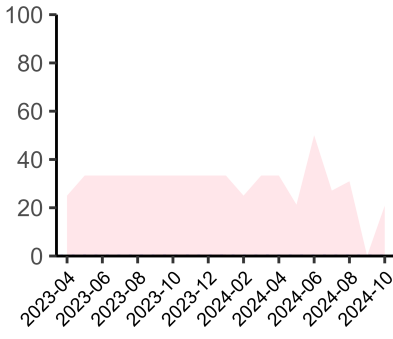
**Combined Infection management standard - antibiotic administration within the correct clinical timeframe**

National mean 21%  
Number of patients included 0  
Data completeness NaN%



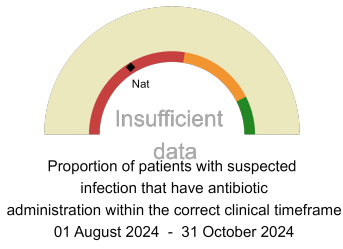
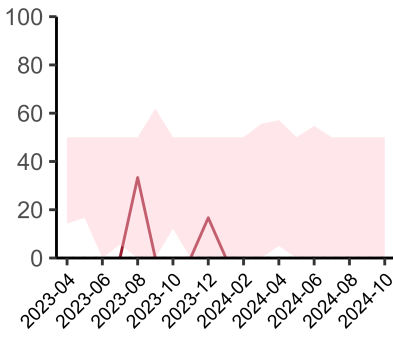
**Septic Shock - antibiotic administration within the correct clinical timeframe**

National mean 23%  
Number of patients included 0  
Data completeness NaN%



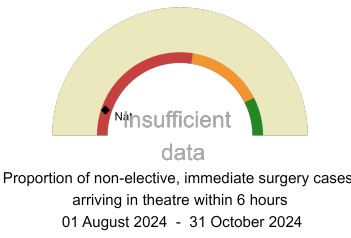
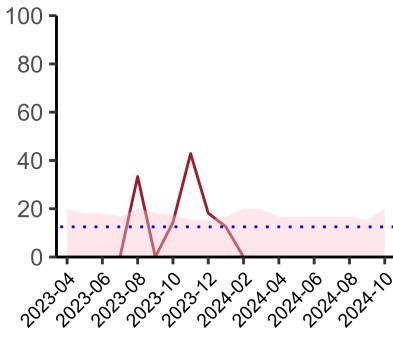
**Sepsis - antibiotic administration within the correct clinical timeframe**

National mean 14%  
Number of patients included 0  
Data completeness NaN%



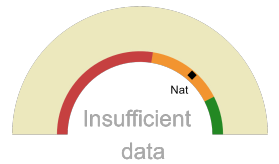
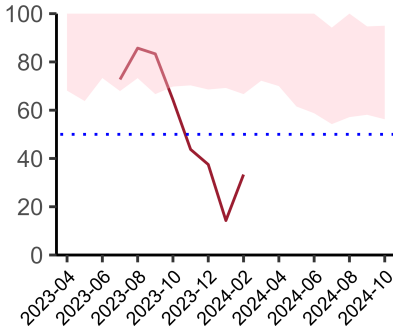
**Infection - antibiotic administration within the correct clinical timeframe**

National mean 32%  
Number of patients included 0  
Data completeness NaN%



**Timeliness - proportion of patients arriving in theatre according to correct clinical timeframe.**

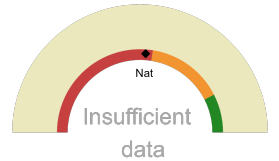
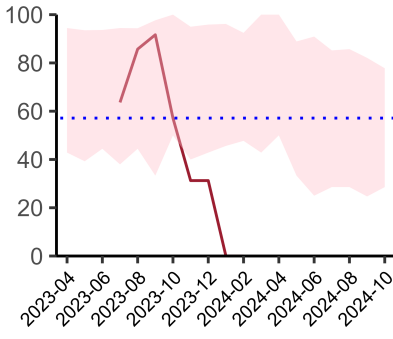
National mean 10%  
Number of patients included 0  
Data completeness NaN%



Risk of death documented before surgery  
01 August 2024 - 31 October 2024

**Risk documented before surgery**

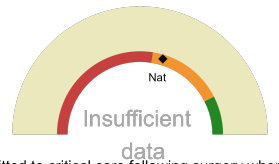
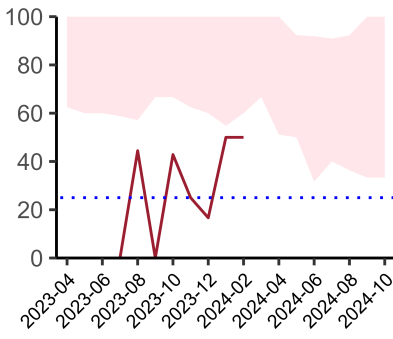
National mean 73%  
Number of patients included 0  
Data completeness NaN%



Risk of death documented after surgery  
01 August 2024 - 31 October 2024

**Risk documented after surgery**

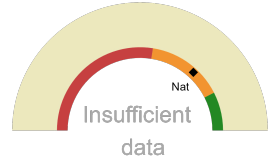
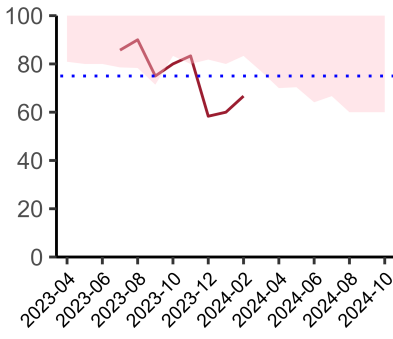
National mean 52%  
Number of patients included 0  
Data completeness NaN%



Admitted to critical care following surgery when the risk of death  $\geq$  5% (Excludes patients who died in theatre or with a decision to palliate)  
01 August 2024 - 31 October 2024

**Admitted to Critical Care (risk of death  $\geq$  5%)**

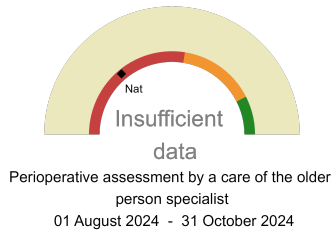
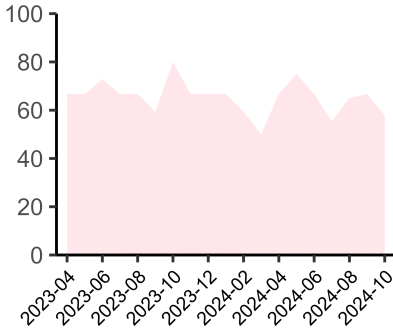
National mean 59%  
Number of patients included 0  
Data completeness NaN%



Consultant surgeon and anaesthetist present in theatre when risk of death  $\geq$  5%  
01 August 2024 - 31 October 2024

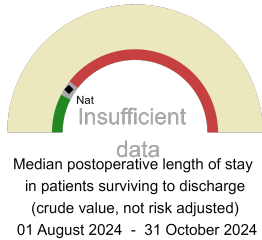
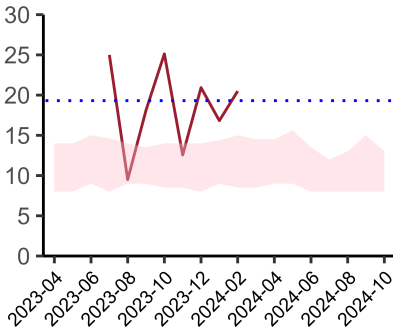
**Consultant Anaesthetist & Consultant Surgeon in theatre (risk of death  $\geq$  5%)**

National mean 74%  
Number of patients included 0  
Data completeness NaN%



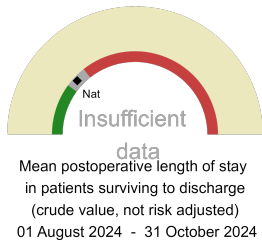
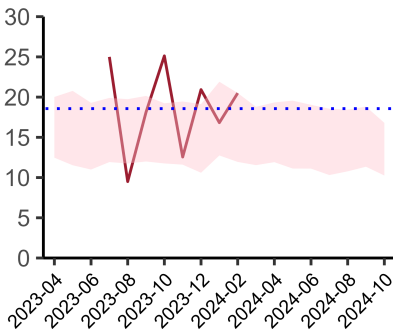
**Perioperative Assessment by a member of the geriatrician-led multidisciplinary team for patient aged 65 or over and frail (CFS ≥ 5) or 80+**

National mean 28%  
Number of patients included 0  
Data completeness NaN%



**Mean postoperative Length of Stay**

National median 11 days  
Number of patients included 0  
Data completeness NaN%



**Median postoperative Length of Stay**

National mean 14 days  
Number of patients included 0  
Data completeness NaN%

**Integrated Care Board**

NHS Staffordshire And Stoke-On-Trent Integrated Care Board ICB comprises Royal Stoke University Hospital.